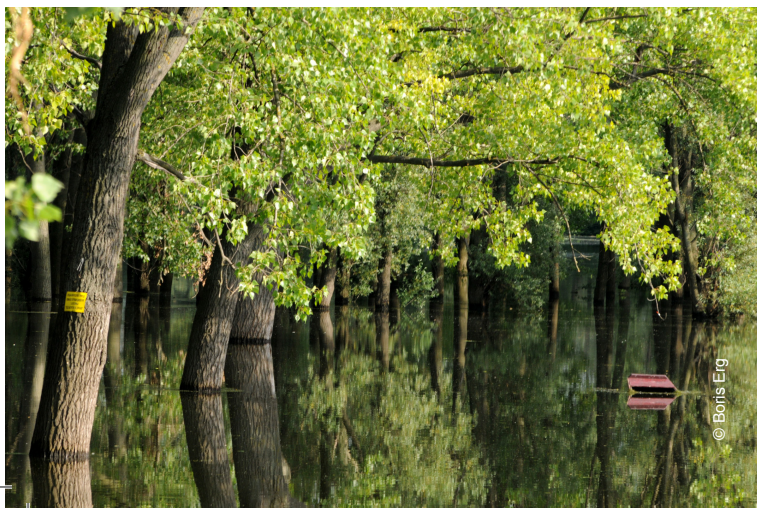


## Nature-based solutions:

1. embrace nature conservation norms (and principles);
2. can be implemented alone or in an integrated manner with other solutions to societal challenges (e.g. technological and engineering solutions);
3. are determined by site-specific natural and cultural contexts that include traditional, local and scientific knowledge;
4. produce societal benefits in a fair and equitable way, promoting transparency and broad participation;
5. maintain biological and cultural diversity and the ability of ecosystems to evolve over time;
6. are applied at a landscape scale;
7. recognise and address the trade-offs between the production of a few immediate economic benefits for development and future options for the production of the full range of ecosystems services; and
8. are an integral part of the overall design of policies and measures or actions to address a specific challenge.



IUCN.ORG/ADAPT  
FACEBOOK.COM/THEADAPTPROJECT

#ADAPT



### IUCN ECARO

Dr Ivana Ribara 91  
11073 Belgrade  
Serbia  
ecaro@iucn.org  
www.iucn.org/ecaro  
www.facebook.com/iucn.ecaro  
twitter.com/IUCN\_ECARO



Printed on 100% recycled paper



NATURE-BASED SOLUTIONS FOR RESILIENT SOCIETIES  
IN THE WESTERN BALKANS

## Introducing ADAPT

ADAPT: Nature-based solutions for resilient societies in the Western Balkans is a three-year initiative funded by the Swedish International Development Cooperation Agency (Sida) and implemented by IUCN. ADAPT works to increase ecosystem and community resilience to climate change and disaster risks by applying Nature-based solutions. It will collaborate with regional and local partners to achieve the following goals:

1

Increasing the knowledge and awareness of nature-based disaster risk reduction solutions among decision makers, natural resource managers and local communities;

2

Integration of Nature-based solutions and equitable climate-smart planning into adaptation and disaster reduction policy; and

3

Implementation of Nature-based solutions for disaster risk reduction and their scale-up.



## What this means in the context of the Western Balkans

The Western Balkan societies are among the most vulnerable with respect to climate change impacts affecting numerous sectors and domains. The application of approaches that integrate ecosystems and nature more broadly into climate change adaptation and disaster risk reduction measures are still insufficient and fragmented. Through ADAPT, IUCN supports actors in the region to explore the value of employing Nature-based solutions in response to societal challenges and to take advantage of the multiple benefits for communities, ecosystems and biodiversity.

## From global to local

All ADAPT activities are framed with the broader global agenda in mind. Particular links will be made with updating of Nationally Determined Contributions submitted under the framework of the UN Framework Convention on Climate Change (UNFCCC), the Sendai Framework for Disaster Risk Reduction, the Convention on Biological Diversity and the Sustainable Development Goals (SDGs). The project will also promote the alignment with EU law on environment and climate. By connecting the global with the local, ADAPT contributes to policy coherence and sustainable practical solutions by employing Nature-based solutions to climate change challenges and disaster risks in the Western Balkans.

[IUCN.ORG/ADAPT](https://www.iucn.org/adapt)

[FACEBOOK.COM/THEADAPTPROJECT](https://www.facebook.com/theadaptproject)

#ADAPT

## What are Nature-based solutions?

*“Actions to protect, sustainably manage and restore natural or modified ecosystems that address societal challenges (e.g. climate change, food and water security or natural disasters) effectively and adaptively, simultaneously providing human well-being and biodiversity benefits.”*



Nature-based solutions are often described as ‘no-regret’ options, providing benefits to people in a range of scenarios